

# shotmeter 4.0

## Quick set-up guide

Online monitoring of shot peening processes for the shop floor



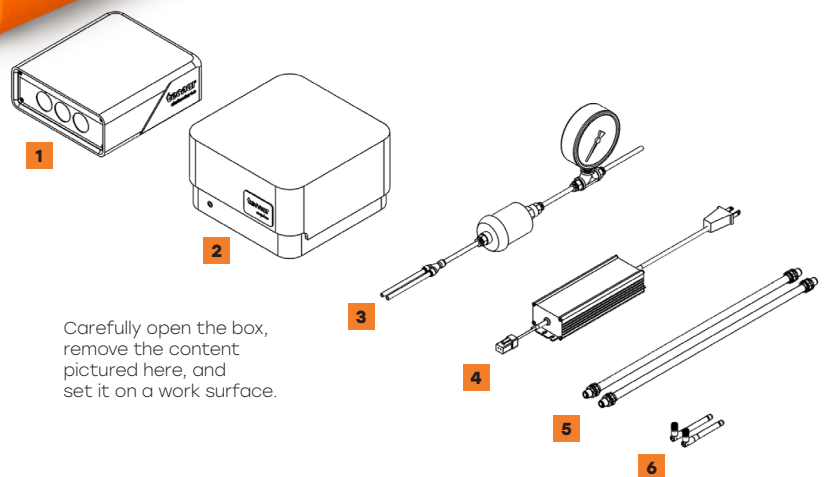
**tecnar**  
Our insight. Your productivity.

## Before you begin

### Unpacking the parts

The box should contain the following items:

1. Sensor head
  2. Controller
  3. Air filter and hoses
  4. Power adapter and cable
  5. Communication and illumination lamp power cables
  6. Wi-Fi antenna
- Spare fuses  
Calibration sheet



Carefully open the box, remove the content pictured here, and set it on a work surface.

## 1. Installing the sensor head

### Where to install

Install the sensor head in the shot peening cell at a permanent location easily and consistently accessible to the robot (peening nozzle). Ensure that the sensor head does not interfere with normal peening operations.

Install the sensor head on a sturdy mounting plate that will not vibrate or move during operation. See dimensions and weight in the user manual. For more information, please contact [service@spraysensors.tecnar.com](mailto:service@spraysensors.tecnar.com).

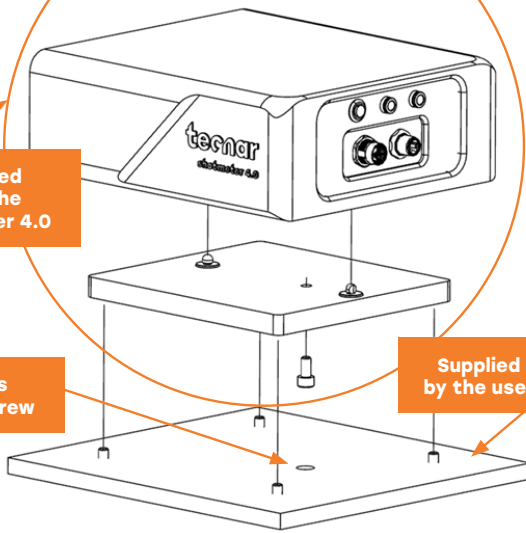
## 2. Installation procedure

Attach the sensor head to its bracket using the 4 mounting holes.

Supplied with the Shotmeter 4.0

Access to the screw

Supplied by the user



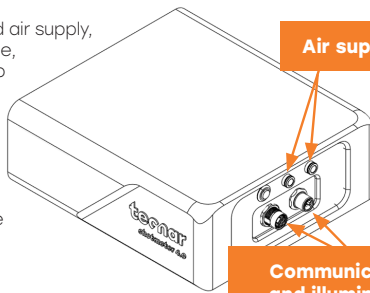
## 3. Adjusting the sensor head

Connect the compressed air supply, the communication cable, and the illumination lamp power cable to the sensor head.

Connect the air hoses to the air supply and adjust the pressure supplied to the sensor head (25-40 psi). Pull the other end of the cables out of the peening cell.

Air supply

Communication and illumination lamp power cables



## 4. Installing the controller

### Where to install

Install the controller outside the shot peening cell.

### Installation procedure

Install the Wi-Fi antennas on the controller.

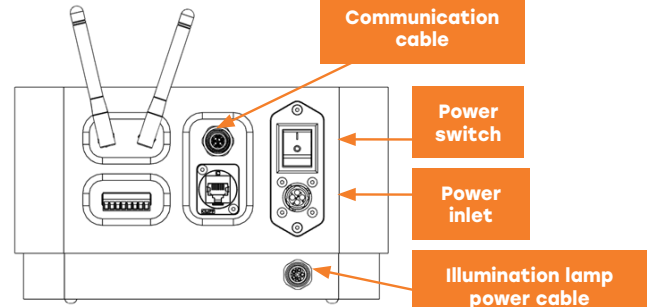
Wi-Fi antennas

Communication cable

Power switch

Power inlet

Illumination lamp power cable



Connect the communication and illumination lamp power cables to the controller.

Connect the controller's power cable, then turn the power switch ON.

Wait until the status LED turns green.

Status LED

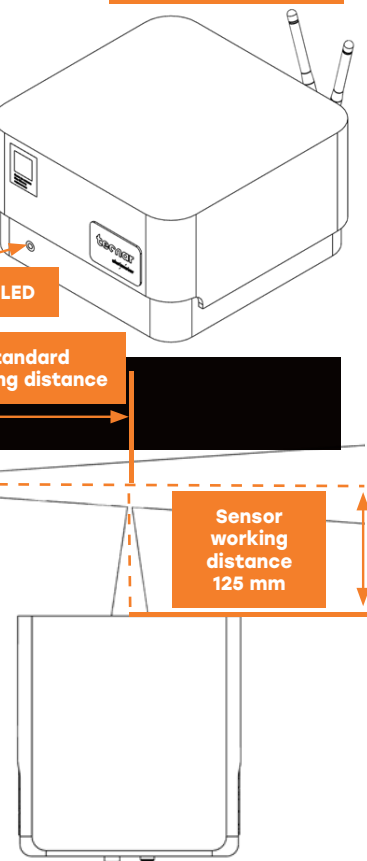
Standard peening distance

Peening nozzle

Sensor working distance 125 mm

Bring the shot peening nozzle near the sensor head as shown on the schematic below. The sensor measurement point is normally set to your standard shot peening distance.

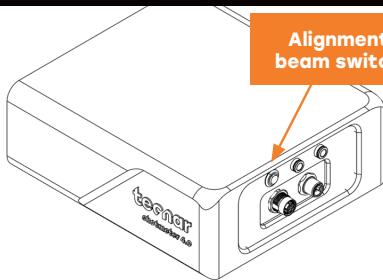
The distance between the front of your sensor head and the peening nozzle axis should be adjusted to 125 mm.



## 5. Adjusting the peening gun position

Activate the alignment beam using the button on the back of the sensor head.

Alignment beam switch



## 6. Accessing the user interface

The Shotmeter 4.0 user interface can be accessed through a web browser, but it is not actually hosted on the internet. It is streamed from the Shotmeter 4.0 controller. We recommend using Google Chrome for optimal performance.

Go to the normal Wi-Fi menu on your computer or tablet and search for "Shotmeter - serial number". The password to access the Wi-Fi is "shotmeter.wifi".

To ensure greater stability and reliability, Tecnar recommends using a wired connection. For more information, please refer to document 40107-00121 - Shotmeter 4.0 Network Connections.

Open your browser and enter <http://shotmeter-00000000/> to log in to the Shotmeter 4.0 user interface.

Replace the zeros with the serial number of the unit that you are trying to connect. The serial number consists of 8 digits that you can find in the Wi-Fi network name or under the controller.

**Register Now.**  
**Activate your warranty.**  
**Get your free virtual training.**

**Activate your warranty to start receiving benefits.**  
Our easy registration process ensures that you get the most from your sensor and enjoy peace of mind with your warranty.



Registration using QR Code or online: [spraysensors.tecnar.com/registration](https://spraysensors.tecnar.com/registration)

- Get free virtual training
- Download manuals and procedures
- Get update alerts
- Chat with the technical team
- Take advantage of your warranty